



## Walking group to host festival

HOLMFIRTH 'Walkers are Welcome' group is to host the first Holmfirth Walking Festival from Friday to Sunday October 4 to 6.

Holmfirth has recently received accreditation as a 'Walkers are Welcome' town, following work by a group based at Holmfirth Library.

To receive the accreditation, the group needed to show support from local businesses, the local council, local interested groups and the general public.

It also needed to show ongoing work to support walking in the Holme Valley and work on local footpath issues.

Now the group is hosting a weekend walking festival and will offer walks of varying distances from two to 10 miles, including central Holmfirth local history walks, a walk on the moors to find wartime aircraft wrecks and several longer walks around the head of the valley.

There will be an outdoor gear swap shop on the Saturday morning, an evening quiz, a story walk and a children's treasure hunt.

Read Bookshop is hosting some walking/outdoors themed events over the weekend including authors' talks and book signings.

Watch out for the full programme of events on leaflets and posters around Holmfirth, email holmfirthishikes@gmail.com, or pop into Holmfirth Library,

# Work begins on alternative plan to reduce congestion

By Josh Timlin

KIRKLEES Council is working on an 'alternative scheme' to reduce congestion in Holmfirth – after shelving original plans blighted by opposition.

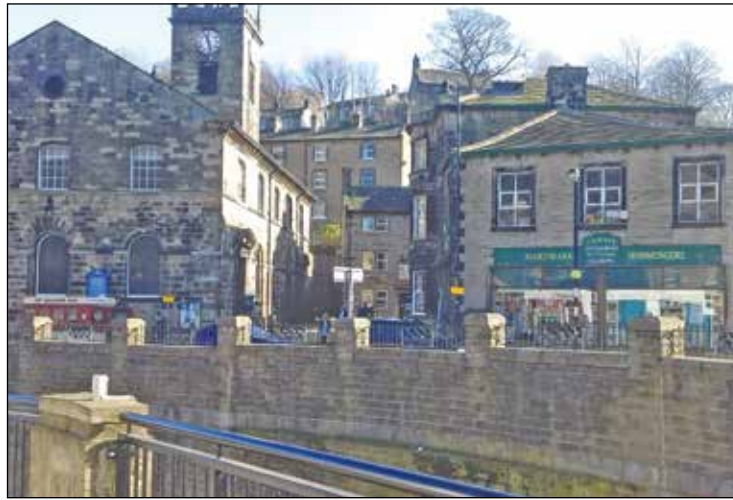
In partnership with the West Yorkshire Combined Authority, the council developed proposals designed to improve traffic flow through the town centre as well as improving the pedestrian experience.

In March this year local residents and businesses were invited to have their say on the proposals.

The original plans included making Victoria Street one-way, creating a mini-roundabout at the junctions between Victoria Street, Town Gate, Hollowgate and Dunford Road and creating a new link road between Hollowgate and the A6024 Huddersfield Road.

However, following a series of exhibitions and a public engagement process, an overwhelming majority of local people were against the proposals.

Coun Peter McBride, cabinet spokesman for regeneration, said: "Kirklees Council decided not to deliver these plans and to redesign a scheme which reflects the feedback received from



residents. Work is underway on designing the new proposed scheme with plans to hold an exhibition this month.

"The revised scheme will be more modest and will not achieve everything set out in the original, therefore funding from WYCA is not yet guaranteed.

"We consult with residents on projects such as this because it's absolutely crucial that plans work for the people they will impact. Delivering a scheme that people don't want is in no-one's interests so we're going to relook at it and propose something different for Holmfirth.

"These new proposals will re-purpose the town centre,

making it a vibrant place to be and will enhance the areas for festivals. It will provide much-needed improvements for pedestrians, while still improving traffic flow through the area - the key requirement for receiving funding from the WYCA.

"We are aware of the Holme Valley Parish Council's draft neighbourhood plan and the work this is trying to achieve, so have mutual objectives in mind.

"We hope the latest proposals reflect this and receive the support from the people of Holmfirth so we can take the scheme forward."

The Holmfirth town centre access plan, led by Kirklees

Council, is funded through the West Yorkshire Plus Transport Fund and the Leeds City Region Growth Deal – a £1billion package of government investment through the Leeds City Region Enterprise Partnership, delivered by the West Yorkshire Combined Authority to accelerate growth and create jobs across Leeds City Region.

A WYCA report added: "Prior to public engagement on the access plan, a significant amount of work was done to assess the road use and layout in Holmfirth town centre.

"The area of Holmfirth is unique and provides many challenges to making major alterations to the roads, but the impact of congestion meant consideration for improvements were necessary.

"Without the backing of local residents and businesses clearly there is no possibility of delivering the plan in its current format. Having listened to the issues raised at the engagement events, a different scheme which would still reduce journey times and increase capacity, alongside improvements to public realm and the aspirations of the neighbourhood plan is being developed."



## PARISH COUNCIL NEWS



## Neighbourhood Development Plan – Don't forget to have your say!

THE latest consultation for the Neighbourhood Development Plan (NDP) finishes on 15th September.

Thank you to all those who have taken part so far giving their views on how to improve our planning policies.

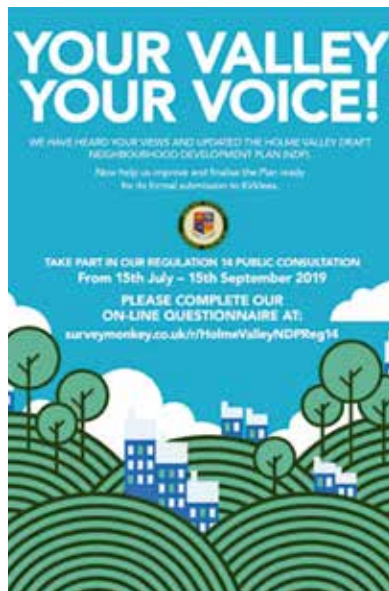
This is also the first time statutory bodies such as Natural England, Yorkshire Water, Historic England and Sport England have had the opportunity to comment on our plan.

All the feedback received will be analysed and used to update our plan.

NDPs were brought in by the Localism Act 2011 so are a relatively new part of the UK planning system. They allow communities to shape development in their areas and are confirmed by public vote through a referendum.

Once made (adopted) it becomes part of the statutory development plan, and is used to help determine planning applications in the Valley, alongside strategic policies in the Kirklees Local Plan.

Its aim is to give local people more say in decisions about proposed developments in



their area by encouraging their involvement in drafting local planning policies.

These will give them a real influence over how, and where, development should happen over the 15 years from 2016 – 2031.

It captures a vision and objectives and proposes planning policies which will help deliver development

which meets local needs and aspirations.

To find out more, look at our website at [www.holmevalleyparishcouncil.gov.uk](http://www.holmevalleyparishcouncil.gov.uk) where you will find background to the plan as well as supporting documentation which has informed this draft plan since the Neighbourhood Plan Steering Group formed in 2016.

This includes research, specialist technical and planning advice and summaries of the public consultation results from 2017 and 2018.

All the key documents including the Neighbourhood Plan in full and Strategic Environmental Assessment are also available to view at Honley and Holmfirth libraries.

You can respond giving us your views through our online questionnaire or if you prefer, a paper version is also available in both Honley and Holmfirth libraries.

We held two drop-in sessions in Honley in late July with our final two drop-in sessions in Holmfirth library from 11am – 2pm on Friday 6th and Saturday 7th September.

## Climate Change Emergency

HOLME Valley Parish Council passed a Motion on 25th March 2019 declaring a Climate Emergency and stating its aim of working towards the Home Valley becoming carbon neutral by 2030.

It was agreed in a later Parish Council meeting to publish an action plan which would seek to implement the objectives of the Motion. The Climate Emergency Sub Group was set up in May and has been working on developing this action plan since then.

The Subgroup has determined the carbon footprint of the Holme Valley Parish area and identified a number of key actions areas where carbon reductions need to be made. A number of working groups were then assigned to develop action

lists for each of these areas. These working groups have produced an initial set of actions for the following areas:

- Energy
- Business and Industry
- Transport
- Waste and resources
- Food and Agriculture
- Environment and land use
- Housing

The overall plan and related actions will be presented to the Parish Council on 9th September. Once the Council has ratified the plan the Climate Emergency Subgroup will work with the Parish Council, Kirklees Council and Community Groups in Holmfirth to implement the agreed actions in order to help take our Valley to a carbon neutral position by 2030.

## Food and Drink Festival

THE Parish Council is pleased to be able to support the Holmfirth Food & Drink festival on September 28 and 29 and help reduce plastic waste by providing free access to the water supply from the Holmfirth public toilets.

This will allow visitors to the festival to refill their water bottles, helping reduce waste and the Parish Council is considering the installation of a permanent water tap in the future as part of its Climate Change Emergency Action Plan.